

Theme: A Mother...A Friend

May 2010

Nancy's Nuggets



WESTERN PRESBYTERIAN CHURCH

The Western Spire

During the months of March through May, Session is participating in explorations in order to refocus our vision for Western Presbyterian Church. To find such a vision, we have slowed down and tried to use our gifts to really understand what is happening here and now, and what might happen for the future. During three small group meetings, Session has drawn upon the experiences of our elders. We have begun to sort through our ministries and to discuss what we will retain, and what we need to release for the future of our congregation. In addition we are thinking about new ministries. This summer as our lives slow down a bit, we will continue our discussions for the future and invite the congregation to think along with us. One major topic to consider is how much energy we have and in what direction we want to head. All this thinking and discussing will involve choices and actions based upon what we believe God is calling us to be and to do.

This year we have opportunities to partner with our Presbytery as well. Two elders recently attended workshops involving the provocative books: Unbinding the Gospel and I'm Not Going to Lead a Dying Church. Both Muffie Beato and Sandy Kelly came back fired up and with the awareness that we are not alone in our ambition to confront the challenges of today's church. Both workshops are to be continued during 2010 with additional opportunities ... If you are interested in attending, please let me know. Details will follow in future editions of the Spire.

The choices we make in the days ahead will affect the future of our congregation in the years to come. The month of May includes an opportunity to affirm the pastor emeritus status of Clint McCoy and to be spurred on by the celebration of children led worship at Pentecost. You are invited to consider your gifts and reminded that age is not a factor in the call of Christ...one is never too old or too young to hear the call of God and to respond. God needs you and Western Presbyterian does too!

Soli Deo Gloria! Nancy J. Farrell

May Worship Plans

The Season of Easter is an ongoing celebration of God's saving act in Jesus Christ. A festival of rejoicing and an air of expectation -- what is God doing next? We'll be asking "What is God doing next?" at Western too. God is doing a lot here today. During May we'll celebrate!

May 2, 2010 Fifth Sunday of Easter

Psalms 147- 150; John 21: 20-25; Sermon "The Story Continues..."

Session is calling a Congregational Meeting for Sunday morning May 2, 2010 at 10:00 a.m.

The purpose of the meeting is to call The Rev. Dr. Clinton McCoy as Pastor Emeritus.

May 9, 2010 Sixth Sunday of Easter -- Easter Continues...

The Rev. Dr. Clinton McCoy was voted on as Pastor Emeritus last week and this week he preaches for us. He and The Rev. Dr Nancy J Farrell will concelebrate The Lord's Supper. There will be a reception between services.

May 17, 2010 Seventh Sunday of Easter

John 17:1-26; Sermon "Standing in the Need of Prayer"

May 23, 2010 Celebration of Pentecost with Children led Worship

Sermon "Gifts and Fruit of the Spirit"

May 30, 2010 Trinity Sunday----More Spirit!

Psalm 8 and Romans 5:1-11

Sermon "Fully Human, Fully Alive"



Jack and Jennie Moak

NOTICE

Attention Church Key holders

Ongoing security issues have created a need for better "off hours" control of access to the church. Therefore, in the near future it is the intention of the Property committee to update security at the church by re-keying the outside doors and the CTNS area. Your present key will still operate most inside locks. The new keys will be numbered and labeled "do not duplicate". Ellen Butler will inventory, issue and record key dispersal to people eligible to receive them.

A Reminder of How We Make Decisions

Current funding for the Mission-Social Concerns Committee came about as a compromise reached following an annual meeting in the late 1990's. PC-USA had made a decision to support Church World Service when they overspent their budget one year, and the details of this led to some disagreement across the US by a minority of individual church members, congregations, sessions, and pastors. Our WPC practice at that time was to retain a small amount of mission money for pre-selected charities and send the rest on to Presbytery (even though it was in considerable excess of their request). A compromise was reached in which the Session decided to only send in the requested amount to Presbytery of Geneva and to make the remainder available as part of the overall resources of our own Social Concerns and Mission committees (later merged into one committee).

But how to spend this money? The Social Concerns committee spent long hours discussing this question. We examined what the WPC congregation held dear, what the various groups and charities did by age group, what location was served by the charities and groups, and what monies would support and increase the effectiveness of our volunteer involvement. We recognized that some charities were more important to the congregation than others.

We knew that music was important, but it already had considerable support. The Angel Tree program was important, so that deserved major support. It later was expanded to include Elder Angels and ARC angels, and we have added the HEAD Start program children. Habitat for Humanity was a major program because there was a home built in Macedon and our congregation was involved. We established a covenant relationship with Habitat. These were local and regional programs. We sent support to the Come-Unity Center for many years, until it was supplanted by the Good Neighbor Fund. To help foreign missions we started to participate in the Presbytery's program to aid its sister presbytery in Mexico - a program that was started by the Presbyterian Church in Elmira. This led to our first "partnership" with a specific church in this Mexican presbytery, and became a major mission. We then looked inward to our own congregation and began a "campership" program to send our kids to Camp Whitman. It was later removed from our committee. Hunger was a major congregational concern, evidenced by Cereal Sundays, volunteers at the Food Pantry, and support for "Meals on Wheels". So the Food Pantry became a recipient of monies and a permanent member of our "watch list". Because of congregation support, we also gave small amounts of money to Big Brothers/Big Sisters, the House of John, a campus charity, the Victim Resource Center, and to fund activities that WPC members are direct volunteers in (Blood drives, CROP Walk, Library assistance)..

Today the concepts remain: 1) Divide our charities into major support and minor support. Include volunteers wherever possible. 2) Support, with volunteers and money, those activities where direct involvement by church members is occurring. 3) Include local, regional, and national/international programs as major programs. 4) Have some money available for emergency situations as they occur (e.g., the Asian Tsunami, the 9/11 disaster, the Katrina hurricane, the 2008 Wayne County Red Cross appeal after a series of fires in multiple dwellings).

Currently our major efforts are: Angel Tree, Good Neighbor Fund, Habitat for Humanity, and Kenya. The food pantry is becoming a more important charity. More modest donations and efforts are directed to Grace Urban Ministries, the Blood drives, CROP Walk, and the Clothing Cupboard. In these we support children, adults/families, and elderly. And we support them locally, regionally, and internationally. See any Committee member with your comments. After all, we represent you.

From Mission/Social Concerns:

Highlight: the Come-Unity Center in Williamson

About a decade ago, and also at the end of 2009, we sent WPC donations to the Come-Unity Center in Williamson. They provide many things to residents in and around Williamson through direct relief and by means of their public store. The food is provided through lunches, food boxes, bags of produce, and bread. They also provide some free clothing and blankets, and occasionally provide direct financial assistance.

When the Good Neighbor Fund was started in Palmyra through the Clergy Council, we chose to give our monies to that organization and stopped our contributions to the Come-Unity Center. However, last year we received special requests for money from Come-Unity several times, so decided to make a small donation; they have had a difficult time meeting the needs of the many poor people in northern Wayne County.

We received some statistics from them as part of their year-end report, and we wanted to publish them for your information.

People served in various categories

People served with Food Boxes	4,804	People served with clothing	36
Lunch guests	2,240	Blankets distributed	39
Produce bags	2,473	People assisted financially	44
Bread	2,220	Income Tax filing assistance	31
Shoppers	12,763	Kids served with Easter baskets	50
		Christmas guests	305

TOTAL Documented: 24,985

Where do the 1,649 families come from?

Williamson	716	Lyons	41
Sodus	361	Alton	39
Newark	97	Palmyra	27
Ontario	85	Walworth	20
Marion	84	Clyde	19
Wolcott	79	Macedon	6
Rose	73	Red Creek	2

What is the ethnicity of individuals?

White	3,648
Black	860
Hispanic	209
Not specified	65
Haitian	8
Jamaican	8
Native American	6

Major Sources of Income of clients:

Wages	496	None	104	Pension	16
Social Security	485	Welfare	97	Workers Comp	6
SSI	207	Disability	64	Child support	4
Unemployment	142	Other sources	27	Aid to Dep Children	1

TOTAL FAMILIES: 1,649

COMMENTS

From all this and other information the administrators of the Come-Unity Center presented several useful comments in their annual report.

1. The average client is an adult who lives in Williamson and has 2-3 dependents.
He/she works at least part-time, but earns less than \$10,000 per year.
2. 42% of the people are either children or senior citizens.
3. 47% of the families being served are headed by adults who are either ill, elderly, disabled or injured.
4. The number of families whose major source of income is "unemployment" has increased by 46%.
5. The number of families served who have NO income ("none") has increased by 19%.
6. The number of people served has increased by 2,557 individuals.
7. The average size of the family served is 2.9 people.
8. Volunteers donated more than 6,000 hours in 2009.

DETAILS: GRACE URBAN MINISTRIES AND THEIR TUESDAY DINNERS FROM THE MISSION COMMITTEE

BY ANDY SLOAN

The March 23 dinner at Grace Urban Ministries (GUM) was a great success, thanks to the WPC congregation. We provided a very nutritious meal of mixed salad and salad dressings, pulled pork sandwiches, apple sauce, juice, and cookies for dessert. Six of us were on location to serve this meal: Dave and Sylvia Lyon, Cassie Hughes, Paul Powell, Lynn Malboeuf, and me. Six people are about all that can really fit in the small kitchen on Dewey Ave. But many more WPC members provided cookies and brownies, the salad ingredients, and rolls. Several other people prepared crock pots of pulled pork and delivered them hot to church in the afternoon. Because of the small space at GUM, we needed to deliver the food hot; crock pots allowed us to maintain the warmth during the serving process.

We arrived by the recommended 4:30 pm deadline to set up for the 5:00 meal. Crock pots were plugged in, stations set up on the stainless steel kitchen table, our rolls and salad were brought out as well as foam plates/plastic utensils (which we also provided). We set up juice, cups, utensils and napkins in the dining/living room. We noted that, on this cold, rainy March evening, that we already had about 50 people crammed into the doorway entrance. Only about 30 people can be seated at one time. So, since we were ready at 4:45, we started serving early. The Reverend Mary Martin, an ordained Methodist minister, began with a short grace. The men removed their hats for this, and Reverend Martin then told the gathering what the meal was. People were very pleased. They sat down, as we in the kitchen dished out the plates and handed them over the half-door to GUM staff members who took them to the tables. Lynn helped the staff in distributing the plates, as we have done in the past. People left and others took their place. We had plenty of meat in the three crock pots of pulled pork; but we ended the evening with only three or four rolls left, and part of a bottle of applesauce. In all, 72 dinners had been provided. A few years ago we usually served only 25-30 dinners, but the economy is much worse for these people who live at the poverty level.

What about leftovers? That is not a problem. GUM keeps the leftovers to be used for the daily lunches that are offered to people who come in from the streets. "Leftovers" include our extra napkins, foam plates, plastic utensils. In our case, we had a good amount of meat and cookies left over. The GUM staff will buy bread and use their microwave for the daytime groups that come in during the rest of this week.

In addition to our group of six, there were five other workers. They are probably volunteers from the community. Two men - Marty and Ulysses - did much of the distribution. Ulysses has worked there since we became involved with GUM. Short, solidly built, friendly and efficient, he keeps the food flowing by moving the plates out, seeing to the salad dressings, drinks, utensils, desserts, and meal clean-up. He knows where everything is in kitchen and dining area, and has a good word for everyone present. Frequently people ask him for special things - extra meat to take home, or extra cookies for kids, etc. A relative newcomer for us was Marty. He was tall and lanky, and also quite popular with the people present. He helped Rev. Martin with packing paper goods for distribution that night, ran longer errands outside our building, and continually told the people "God bless you" as he attended to the distribution of food. He joked with the guests and they seemed to really like him, too. Two other women, whose names we didn't get, were occasionally helping during high volume times. And, of course, Rev. Martin was there directing it all to keep things moving.

The Reverend Mary Martin, as previously mentioned, is an ordained Methodist minister. She has been involved with GUM for several years, and has taken the Tuesday night dinners as her responsibility. Although she had been semi-retired, she was available as a pulpit supply minister until more recently, when she became the minister in Canadice for the Methodist Church there. She felt "called" to return to preach

G.U.M. continued

regularly. She does not know details about the daytime programs at GUM anymore, but she concentrates on all aspects of the dinners. She arranges for groups to prepare dinners. On nights when no one has volunteered, she does the dinners herself. If money is tight, she makes hot dogs or hamburgers. She makes sure that she has the volunteer staff available at these times. She checks guests to be sure that they are "presentable" - if they come smelling of alcohol or under the influence of drugs, she sends them away until "they clean themselves up". They can return later for a meal. She normally starts the meals with a simple prayer at 6:00 pm and "works" the room as the guests eat. But she has also started another distribution program.

During the day on Tuesdays, Rev. Martin prepares grocery bags labeled "men" and "women". In these bags she has placed a couple of rolls of toilet paper and personal cleanliness items - things not available with food stamps, but necessary in a household. The way she set up the system is that people have signed up for, and have received, a token in advance. They can exchange their token for a bag of supplies. There are rules regarding how many bags people can get, based on household size, and none of the workers nor the community appreciate "cheaters". She is always looking for donations of clean grocery sacks that she can fill or contributions of paper products.

What about the guests? Their ages vary - men, women, children. They dress as you would for any gathering. A woman went by me whose name was 'Betty'. About 50 years old, she wore a necklace of plastic beads with a center figure. I commented on it; she replied that her 9-year old granddaughter made it for her and was very proud of it. Previously I spoke with a man who had worked for Mobil Chemical Co. in New England somewhere years ago, so we compared notes. Another man liked to fish, so we talked about those experiences for a while. I asked them about crime in their neighborhood. They said that there was some, but everyone looks out for each other. A good Christian attitude, I thought. And WPC, at least on that cold March night, made "getting by" a little easier.

Help!!

For some of our activities, we need help from members of the congregation. For the Red Cross Blood Drive, for example, we needed people to sign up for the sign-in table and for the refreshment table. For the clothing cupboard, we need people to sign up for staffing it on Monday and Wednesday evenings for the 3rd week of the month. Sometimes we need help for the GUM dinner - on site or behind the scenes preparing food. Each of you have skills that we can use. Our committee can do some of the work, but we can't so it all.

On the Mission bulletin board, we are trying to let you know our needs through a poster titled "**What Can I Do?**" Look it over when you are in the hallway, and please volunteer if you are able. Thanks.

The Mission/Social Concerns Committee

PC-USA empowers a "Presbyterian Panel" every three years to obtain their viewpoints on various topics over the next 3 years. These are compiled and reported on the PC-USA website. In a recent study on Environmental Perspectives, the number of surveys received from the panel in various categories were: members - 455 (919); elders - 602 (1083); ordained ministers- 824 (1456). The parentheses indicate how many surveys were sent out to each group. In the ordained ministers categories, results are broken down into "pastors" and "specialized clergy".

The two largest topics of concern for all 4 groups were consumption of oil, gas and other non-renewable resources and climate change (global warming due to the greenhouse effect). The % selecting various topics as their top two were as follows:

<u>CONCERN</u>	<u>Members</u>	<u>Elders</u>	<u>Pastors</u>	<u>Spec Clergy</u>
1. Consumption of nonrenewables:	48%	43%	44%	42%
2. Climate change	41%	32%	50%	60%
The other possibilities were:				
3. Rapid population growth	20%	24%	14%	16%
4. Environmental contamination	20%	19%	13%	14%
5. Destruction of natural/wildlife areas	16%	19%	11%	11%
6. Water resource distribution	16%	18%	21%	9%
7. Agriculture runoff	13%	10%	7%	10%
8. Consumer demand- materialism	11%	15%	28%	21%
9. Nuclear waste	7%	9%	4%	4%
10. Loss of species - extinction	4%	3%	4%	3%
11. Mountaintop removal - mining	2%	3%	2%	1%

Note: Each respondent had two (2) votes for his/her top two (2) concerns.

On the question whether there is solid evidence that the earth is warming and that this warming is due to human activity, the breakdown of those agreeing is as follows:

members - 35%; elders - 32%; pastors - 48%; spec. clergy - 64%

However, when asked whether environmental issues are appropriate social concerns for the church, those who strongly agree or somewhat agree were as follows:

members - 69%; elders - 66%; pastors - 90%; spec. clergy - 95%

The panel was asked about the relative importance of economic issues and environmental issues this way: How strongly do you agree or disagree with the statement "First comes economic security and well-being, and then we can worry about environmental problems". Those who strongly agreed or somewhat agreed with the statement:

members - 40%; elders - 38%; pastors - 22%; spec. clergy - 12%

For the question: "Are you very or somewhat willing to pay much higher **prices** to protect the environment?" the answers were:

members - 52%; elders - 53%; pastors - 71%; spec. clergy - 78%

And for the question: " Are you very or somewhat willing to pay much higher **taxes** to protect the environment?" the answers were: members - 42%; elders - 41%; pastors - 60%; spec. clergy - 74%

How do your opinions relate to these? What patterns do you see in the data? Are you interested in reading more about the viewpoints of Presbyterians regarding the environment? There are many, many more questions and responses in the report. The report highlights can be found online at www.pcusa.org/research/panel. It is good reading!

FARM FRIEND'S 4-H CLUB



VISITS THE WAYNE COUNTY NURSING HOME

By Cedella & Leah Schinsing

The Farm Friends 4-H Club went to the Wayne County Nursing Home on Saturday April 3, 2010 and brought five bunnies to share with the residents. The bunnies names were Smokelove, Laura, Uno, Moonshine and Hershey. The residents loved the bunnies. Some of the residents had bunnies while they grew up and enjoyed reminiscing about their childhood. The Farm Friends who attended were Marie and Jonathan Coyle, Cedella, Marlee, Leah, and Anna Schinsing, Kelly, Robin and Caleb Nagel and Emma Mrzywka. The Farm Friends also passed out Spring & Easter cards which made the residents so HAPPY! The Farm Friends brought the bunnies to bring the residents a little of Easter cheer.



Three generations!

Don't Forget the Clothing Cupboard!!

We are doing well and average 5-10 families per week. We have just changed our stock from winter to summer and noticed that we are in need of warm weather clothing. Please spread the word to everyone you know that we appreciate all donations of children's clothes! We are also in need of monetary donations with the purchase of a new sign as our goal. Please contact Ellen or Alicia.
Thank you!!



**Western Presbyterian Church &
Palmyra Reformed Church**

Proudly Presents

Vacation Bible School 2010

July 19-July 22, 2010

9:00am-11:30am

Ages: 3 years old through 5th grade

What children will learn at Kingdom of the Son:

Through exploring the Lord's Prayer, children will learn to talk with God and will be encouraged to develop a personal relationship with Him. Leaders will share with the children the message of salvation through Jesus Christ.

Children will go wild for the Kingdom of the Son!

During this spectacular prayer safari, children will journey into the Serengeti—the magnificent grassland region of Tanzania and Kenya. They'll discover exotic animals, create safari crafts, play exciting games, sing upbeat songs and enjoy delicious safari snacks.

And while the children are having fun, they'll also learn to talk with God as they explore the Lord's Prayer and go on an expedition into the pages of God's Word.

Currently we are recruiting creative and artistic people, musically & dramatically inclined personalities and anyone else that has a heart to further the kingdom of God!

Contact Cim McFarlane: cgunkle1@rochester.rr.com



A Volunteer Opportunity for you....

Ready to take a ride on the wild side?
Join the *Kingdom of the Son* team!

Here's the fun stuff you'll do!

- Get rockin' at a special staff training meeting—we'll make sure it's fun!
- Attend Kingdom of the Son—even for **Just One Morning** (You know *that* will be great!)
- Participate in fun activities while building relationships with a group of elementary age children (Who would say no to that?)

Arrive 15 minutes early to greet the children and their families (Hug, anyone?)



Hello Friends,

If we can get you to commit **Just One Morning** to helping out, we can do amazing things for our kids at **Kingdom of the Son; A Prayer Safari**.

Will you please take Just One Morning?

We'd love to help you get involved in any way that works for your schedule and interests. What would you like to do? When would you like to do it? We'd like to work with you to make sure all parents/friends/congregation members can pitch in. *Involvement is for everyone.*

We'd love your help Just One Morning, and --Really! We promise! – There's no obligation beyond helping out in this small, but important way. If you'd like to do more – great, but we know that's not a fit for everyone.

Participating for **Just One Morning** is easy. Simply sign up in Fellowship Hall on the bulletin board or contact Cim McFarlane and Lisa Premyslovsky. We'll then be in touch with opportunities that fit your interests and availability.

Together, we can make a huge difference at **Kingdom of the Son!** As always, please feel free to call or email if you have any questions or concerns.

Thanks in advance,

Cim McFarlane Cgunkle1@rochester.rr.com Lisa Premyslovsky 597-4877

Your **Kingdom of the Son** Directors



Schedules

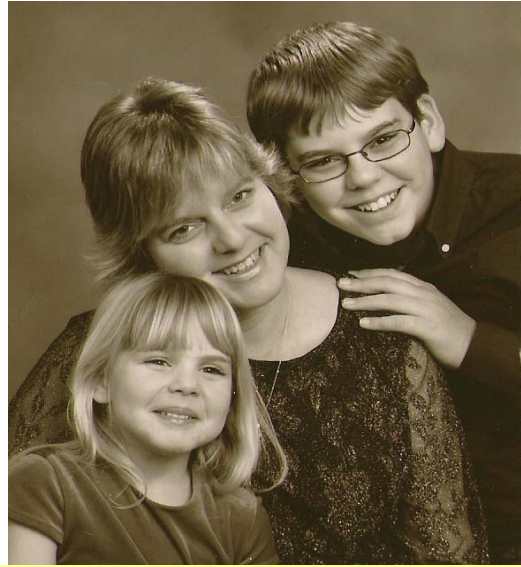
Assistant Elders

8:30

- 5/2 Irene Fadden
5/9 Lynn Malboeuf
5/16 Carol Sloan

11:00

- 5/2 Ruth Dantz
5/16 Janet Manktelow
5/30 Katharine Smith



Ellen & Mitchell Shafer & Corrin Butler

Communion Elders 11:00 5/9

Frank Lawrence, Janet Manktelow, Paul Powell, Don Dantz

Head Ushers 11:00

The Marrs

Coffee Hour

- 5/2—Bucknams
5/9—MDE
5/16—Helene Scribner &
Jonnie Fontaine
5/23—Church Picnic

Before I was myself you made me, me

*Before I was myself you made me, me
With love and patience, discipline and tears,
Then bit by bit stepped back to set me free,
Allowing me to sail upon my sea,
Though well within the headlands of your fears.
Before I was myself you made me, me
With dreams enough of what I was to be
And hopes that would be sculpted by the years,
Then bit by bit stepped back to set me free,
Relinquishing your powers gradually
To let me shape myself among my peers.
Before I was myself you made me, me,
And being good and wise, you gracefully
As dancers when the last sweet cadence nears
Bit by bit stepped back to set me free.
For love inspires learning naturally:
The mind assents to what the heart reveres.
And so it was through love you made me, me
By slowly stepping back to set me free.*

Prayer List

Grieving

Friends & Family of Donald Beach
(requested by the Deacons)

Friends & Family of Gertrude Hill
(requested by the Deacons)

Friends & Family of Kathy Culver McKee
(requested by the Deacons)



Emily Hunt & Patricia Dlugosh

Others for whom prayers have been requested:

Colleen Antonio, Tom Beaucage, Mary Jane Birky, Alice Blazey, Jim Breen Sr., Clara Coniff, Patty Cocquyt, Jean Craft, Tracy D'Arduini, Jim DePoint, Floyd Deyo, Jim Elliot, Peggy & Ted Eskild, Nicole Ferraro, Janet Fitzgerald, Bob Gerace, Frank Huber, Alice Fadden, the people of Haiti, Fayette Hall, Connie Haber, Maxwell Harris, Mary Ann Klein & Family, Kathy Krager, Cindy & Terry Leaty, June Lill, Joan Lucci, David Matteson, Marjorie McMullin, Jim Nolan, Katherine Ohmann, Betty Olsen, Rita Otterbein, Frank Palma, Art & Katie Piwcio, Mark Preston, Stephen Reed, Doris Rice, Anne & Bill Rock, Heather Semans, Jim Schmitz, Ken Somers, Cathie & Ray Staton, David Steensma, Kelly Williamson

Thank You

The family of Kathy Culver– McKee would like to thank Rev. Dr. Nancy J Farrell and the entire congregation for their visits, notes of sympathy, thoughts and prayers. We appreciate the love and support of our entire church family during her illness and the loss of our daughter, sister and aunt. We know that Kathy is at peace in the hands of our Lord and Savior.

Love, Bob and Jane Culver, Paul and Pat Dlugosh, Josh and Emily Hunt, and Ben Dlugosh

**WESTERN PRESBYTERIAN
CHURCH**

More than a Sunday morning thing

May 2010

Sun	Mon	Tue	Wed	Thu	Fri	Sat
						1 Rich/Griffin Wedding 3pm
2 VBS Preview 9:30 Congregational Meeting	3 7pm MDE	4 2pm Deacons	5 7pm Garden Club, CTNS	6 7pm Choir Banquet Set up	7 Mother Daughter Banquet 6pm	8 Yard Clean up 8am
9 Mother's Day Reception for Clint 9:30	10 CTNS Closed	11 7pm Worship, SC, GE, Property	12 7pm King's Daughters	13 7pm Choir	14 6:30 4H	15 Manktelow/Bucknam Party 1pm
16 SS Open House 8am Coffee Hour	17 Pal Mac Select Choir Rehearsal 2:30pm	18 1pm Circle Pal Mac Select Choir Rehearsal 2:30pm	19 7pm Finance 7:30pm Circle IV	20 7pm Choir	21	22 9:30am 4H
23 MDE Picnic Pentecost Children Led Service, 11 only SS Teacher Recognition, Presentation of bibles	24 Preservation Conference	25	26 7pm Session	27 CTNS 3's Last Day 7pm Choir	28 CTNS 4's Last Day	29
30 9:30am service starts	31 Memorial Day Office & CTNS Closed					

Western Presbyterian Church
101 East Main Street
Palmyra, NY 14522

Phone: 315-597-9171
Email: office@wpreschurch.org
Website: www.wpreschurch.org

June 2010

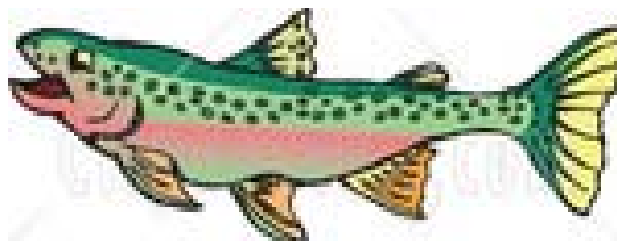
Sun	Mon	Tue	Wed	Thu	Fri	Sat
		1 2pm Kings Daughters Dinner 2pm Deacons	2 7pm CTNS, Garden Club	3	4	5
6 Piano recital 2:30	7 7pm MDE	8 7pm SC, CE, Worship, Property Circle I Taranwouid	9	10	11 6:30pm 4H	12 1pm Beach Vow Renewal
13	14 Ellen Off	15	16 7pm Finance 7:30pm Circle IV	17	18 Spire stuff Due	19
20 Father's Day	21	22 7pm Session	23	24	25	26
27	28	29	30			

*Reception with
Rev Dr. Clinton McCoy*



*Sunday, May 9th
9:30 am
(between services)*

*Come have coffee with our
“catch of the day”!*



Church Picnic

*Western Presbyterian Church
Annual Picnic
Sunday, May 23rd
following worship*



Provided:

Hots



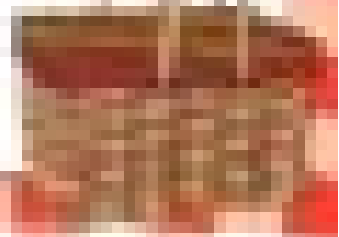
Hamburgers



Drinks and desserts

Please bring your own table service
and a dish to pass

Bring a friend and come join the fun!!



Birthdays and Anniversaries

May 1	Courtney	Marr
May 3	Lynn	Chamberlain
May 6	Robert	Yost
May 6	Marc	Blankenberg
May 8	James	McFarlane
May 8	William	Roland
May 9	Noah	Scribner
May 10	Kimberly	McFarlane
May 11	Catherine	Lane
May 11	Peter	Bush
May 11	Dorothy	Manske
May 12	Julie	Scribner
May 13	J. Steven	Ellis
May 15	Fred	Alderman
May 15	Susan	Moak
May 19	Christopher	Taylor
May 21	Jocelyn	Kratzert
May 21	Mark	Trombino
May 22	Michael	Pinkney
May 23	Deborah	Trombino
May 24	Philip	Opdycke
May 25	Sarah	Lynch
May 27	Bessie	Dohse
May 27	Clara Mae	Callward
May 30	Tammy	Hoflich

May 1	David & Patti	Squier
May 1	Lindsay	Hobbs
May 4	Rochelle & C. Lloyd	Morse
May 5	Alicia & Tom	Lynch
May 6	Wendi & Scott	Lynch-Gagliano
May 11	James & Daphne	Hemmings
May 16	Elizabeth & David	Lewis
May 17	Betsy & Terry	Goodwin
May 17	Gary & Rena	Haigh
May 20	Barbara & Gene	Bucknam
May 21	Carolyn & William	Roland
May 24	Laurie & Todd	Pipitone
May 30	Irene & Peter	Fadden

**WESTERN PRESBYTERIAN
CHURCH**

Western Presbyterian Church
101 East Main Street
Palmyra, NY 14522

Phone: 315-597-9171
Email: office@wpreschurch.org
Website: www.wpreschurch.org

More than a Sunday morning thing

We're on the web!
[Www.wpreschurch.org](http://www.wpreschurch.org)

Mother Prayer

Dear Lord,
today we pray for mothers--
our own mothers, and mothers everywhere,
who have made such a major contribution
to the good qualities we have,
sometimes through genetics,
more often through great effort and patient instruction,
and who have done their best
to gently polish away our rough edges.
Lord, please bless our mothers
for the endless hours of time they spent
and the boundless energy they invested in us.
Bless our mothers for their sacrifices on our behalf
as they often gave up or deferred their own dreams
so that we could have ours.
Bless our mothers for always being there for us,
for being the person we know we can turn to
when we need comfort, encouragement, or just a hug.
Bless our mothers for making a home for us
where we could feel safe, where we felt we belonged.
Most of all, Lord,
bless our mothers for their unconditional love,
for loving us no matter what,
and for frequently showing love
in ways that make us feel valued and cherished.
Lord, please bless our mothers mightily.
Strengthen them, soothe them,
wrap them in Your infinite love
and shower them with blessings
too numerous to count, too magnificent to describe.
We love them, admire them, respect them,
and we wish that You would give them back
many times the good they gave to us.
In Jesus' name we pray; Amen.